

Chippewa Valley Buy Local Consortium

An Overview



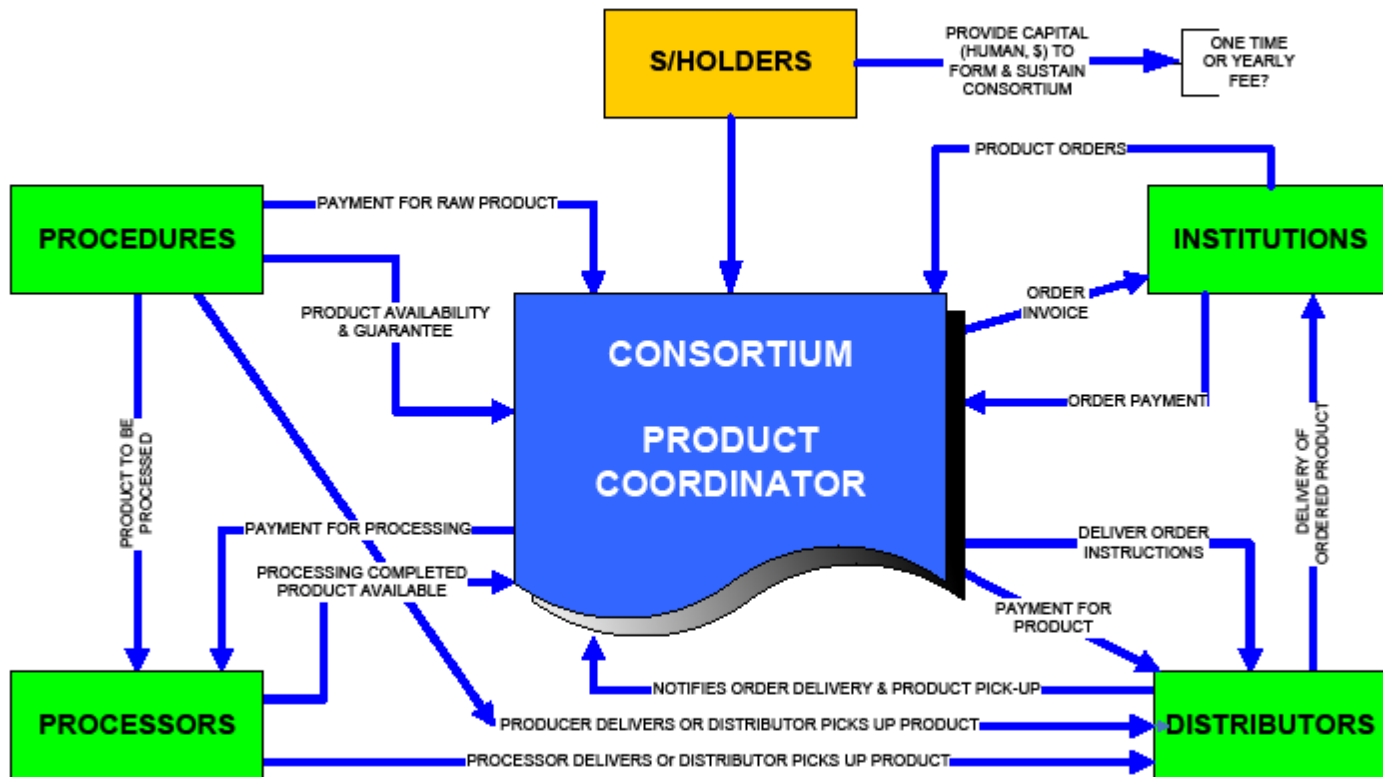
History

- **Jan 2008 – Sacred Heart & River Country representatives meet at Midwest Value Added / WI Local Food Summit in Eau Claire**
- **February 2008 – Sacred Heart & River Country form a partnership to develop the infrastructure to channel local products into institutions.**
- **Late February 2008 – The first meeting of the project steering committee takes place.**
- **Early March 2008 – The project applies for a Buy Local Buy WI grant.**

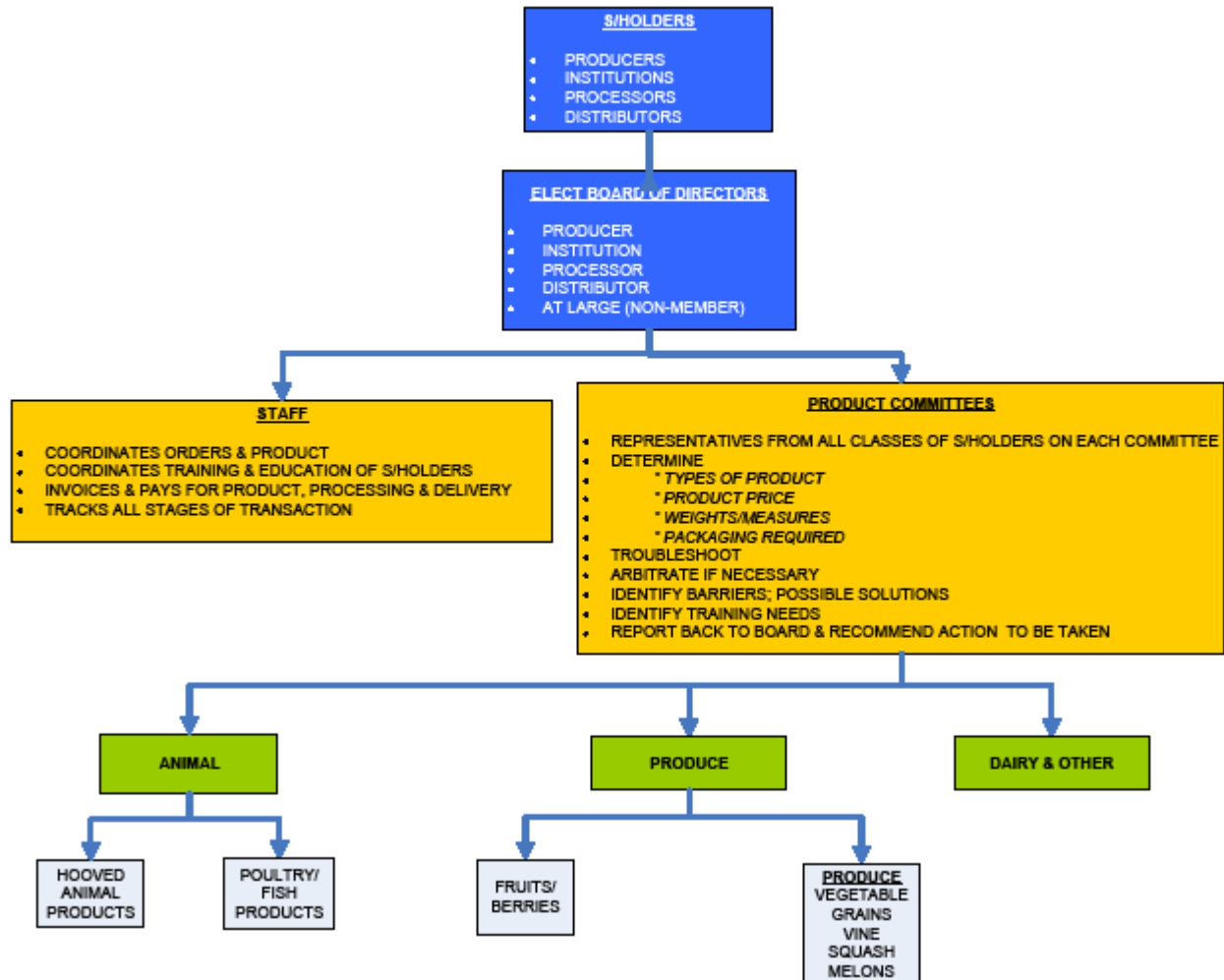
History Cont.

- **May 2008– The Steering Committee decides to begin “working-out-the-bugs” by starting with delivery of beef products to Sacred Heart.**
- **May – December 2008 –The committee meets periodically and develops working organizational model.**
- **June 2008 – first delivery of product by the consortium to the hospital.**
- **December 2008 – General Structure and Operating guidelines for the consortium are completed. The Consortium starts process to become a legal entity.**

Chippewa Valley Buy Local Consortium (WORK FLOWCHART)



Chippewa Valley Buy Local Consortium ORGANIZATIONAL CHART



Successes and Challenges

- Product moving into Sacred Heart.
- Expanded the scope.
- Positive exchange of knowledge and “realities”.
- Identified many potential new local support businesses.
- Figuring a way to sustain the Consortium.
- Defining a “fair price”.
- Standardizing product for ease of buyers.
- Need for more local processing capacity.

Next Steps

- Complete the process to become a legal entity
- Open membership/advertise for more producers, processors, distributors, and buyers
- Identify and develop needed education for members
- Expand line of products available to buyers
- Find ways to overcome identified challenges

For More Information



Pam Herdrich
RC&D Coordinator

P 715-834-9672
F 715-834-8663
E pam.herdrich@wi.usda.gov



1304 N. Hillcrest Pkwy, Suite B • Altoona, WI 54720